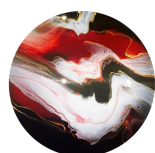


Resin Art Gift Pack Application Guide



Cell-Base Marooned

It's so easy to create a resin art masterpiece using Eli-Chem Cell-Base & MasterCast art resin, coloured tints and metallic pigments. Simply follow the step by step instructions below and get creative!

Prepare

Cover your workspace with cardboard or plastic to catch the drips and balance your canvas or art board on upturned cups placed away from the edge of the board. If using a canvas make sure it's completely level to avoid slumping.

STEP
1

STEP
2

Combine

Pour equal parts of MasterCast Art Resin and hardener into the large measuring cup, the 1:1 ratio by volume of MasterCast makes this simple and ensures the resin cures perfectly.

Mix

Stir the resin mixture for at least 3 minutes, making sure you scrape all the liquid from the sides and bottom of the jug to ensure thorough mixing.

STEP
3

STEP
4

Cell-Base

Add a small amount of the Cell-Base pigment to one of the smaller cups and then add half of the mixed resin (10% Cell-Base to resin ratio) and mix thoroughly.

Split

Pour the remaining mixed MasterCast resin into each of the 3 remaining small cups.

STEP
5

STEP
6

Tint

Add the 2 resi-TINT MAX and resi-METAL tints to the resin in the 3 small cups, they are very concentrated so you only need a little. the resi-TINT+ Metallic Powder can be added to one of these colours or sprinkled lightly over your artwork whilst it is still wet.

Cell-Base Layer

Once the resin and pigment are thoroughly mixed, spread the Cell-Base mixture onto your board as a base layer, completely covering the board. Pass a heat gun gently over the Cell-Base layer before applying the pigmented resin.

STEP
7

STEP
8

Pigment Pour

Immediately pour the cups of tinted resin onto your Cell-Base layer one at a time and then swipe or drag the top colours over the base layer and watch the cells forming.



Bubbles

Bubbles naturally occur in the mixing process, these can be dispersed by passing a heat gun over the resin at a distance of 30cms.

STEP
9



STEP
10

Admire

Stand back and admire your masterpiece! Cover your resined piece with an upturned box to protect it from dust as it cures. The resin will be touch dry in 6-7 hours and fully cured in 24 hours.

An application video for Cell-Base can be seen on our website along with design ideas and inspiration for colours. <https://www.elichem.co.uk/cell-base-instant-cell-creator>

You will need



Resin Art
Gift Pack

+



Art Board
/ Canvas

+



Heat
Gun

=

